

Narrow Neck to Castle Head



1 hr 45 mins

Hard track

4

4.2 km Return

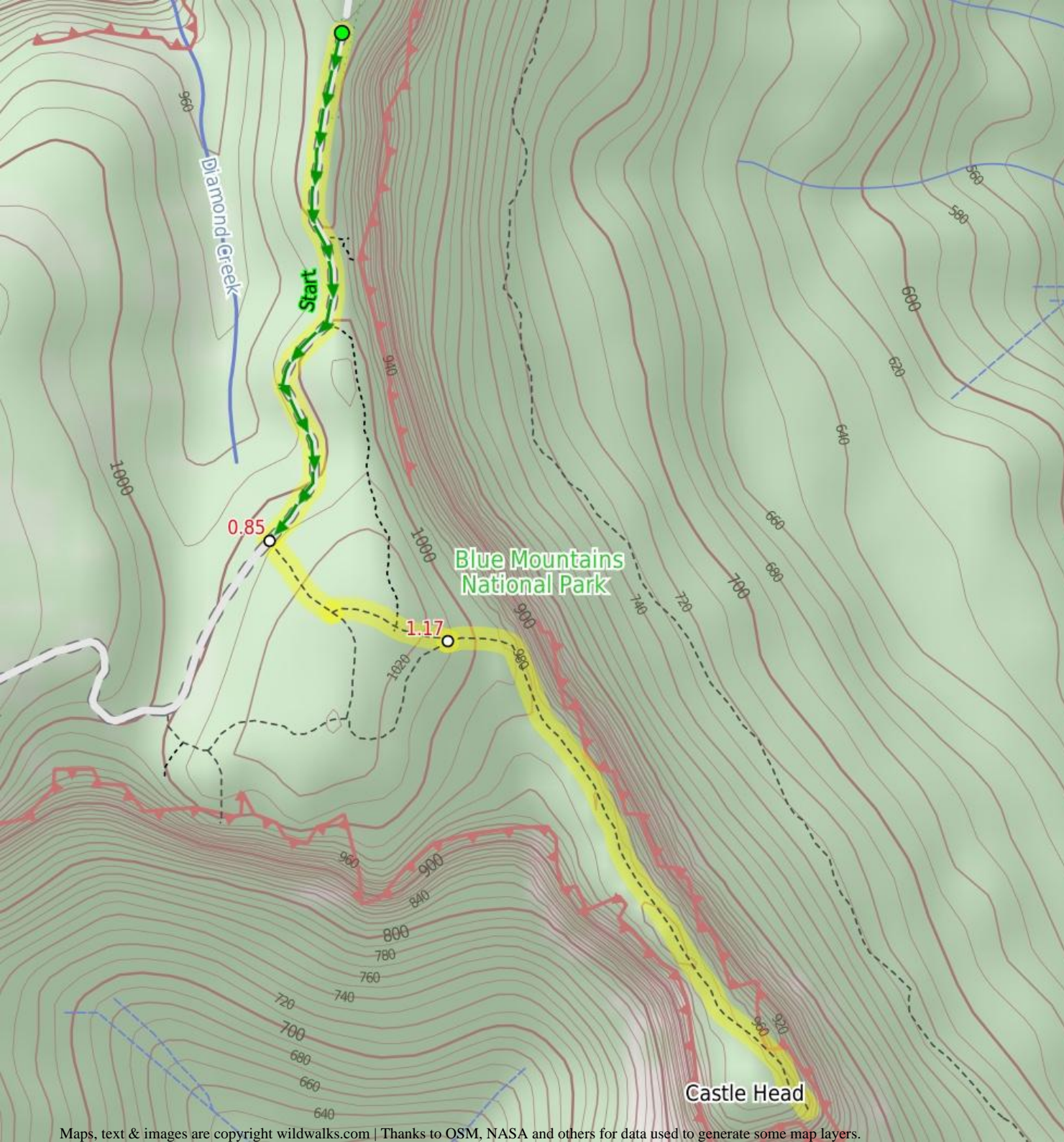
▲ 229m

From the locked gate on Glenraphael Dr, on Narrow Neck, this walk heads out to Castle Head lookout. From the Lookout, there are fantastic views over the Jamison Valley back to Katoomba and over to Mount Solitary. You get a birds eye view of Ruined Castle, and distant views of the Three Sisters. Much of the walk follows the western escarpment, giving views most of the way. The road out to the gate is dirt, and is generally well maintained.

950m

1029m

Blue Mountains National Park



Are you ready to have fun?

Please ensure you and your group are well prepared and equipped for all possible hazards and delays. Check park closures, weather information and Fire Danger Rating before setting out. Optional side trips and alternate routes noted are not included in this walks overall grade, length or time estimate. Please allow extra time for resting and exploring areas of interest. The authors, staff and owners of wildwalks take care in preparing this information but will not accept responsibility for any inconvenience, loss or injury you may experience. Please take care, have fun - Happy Walking.

Getting there Traveling by car is the only practical way to get to Locked gate (gps: -33.7409, 150.2801). Car: There is free parking available.

This is a return, so you will finish back at the start.

Find up to date and more information including; travel directions, weather, park closures and walker feedback at <http://wild.tl/nntch>

0 | Locked gate

(850 m 16 mins) From the emergency access gate, this walk heads south along the management trail. After a while, it comes to the northern Castle Head track (on the left side of the trail), marked with two treated pine posts either side of the bush track. (For emergency access, keys to the National Park gate are available from the local council, police and National Parks services.)

0.85 | Int of Glenraphael Drive and northern Castle Head

(320 m 8 mins) Turn left: From the intersection, the walk heads west, off the management trail and through the bush. The track steadily climbs up a hill until coming to an intersection with another track (linking the northern and southern Castle Head tracks).

Turn left: From the intersection, the walk heads south-east through the bush, where it climbs over a small hill then meets an intersection of the southern Castle Head track.

1.17 | Int of northern and southern Castle Head tracks

(940 m 23 mins) Veer left: From the intersection, the walk heads east for a short distance, then turns towards the south nearer the cliffs, continuing along the bush track which runs parallel to the edge of the cliffs. A little while after, the track climbs steadily to the top of the ridge then proceeds down to the first abseil and lookout point of Castle Head.

2.11 | Castle Head

Castle Head has an old trig station and sits on a point on the eastern side of Narrow Neck plateau. From this lookout there are great views across the Jamison Valley, and especially good view across the Ruined Castle to Mt Solitary.

